

# panache

Settle. Amaze. Celebrate Sector V.

Marketed by: **MOD**  **RN**  **9836 29 29 29**

 [sales@modernproperties.in](mailto:sales@modernproperties.in)

Actual Wetlands View



Marketed by: **MOD**  **RN**  
PROPERTIES  **9836 29 29 29**

 [sales@modernproperties.in](mailto:sales@modernproperties.in)



Actual View from Balcony



Marketed by: **MOD**  **RN**  
PROPERTIES  **9836 29 29 29**

 [sales@modernproperties.in](mailto:sales@modernproperties.in)



Bird's eye view



Marketed by: **MOD**  **RN**  
PROPERTIES  9836 29 29 29

 [sales@modernproperties.in](mailto:sales@modernproperties.in)





---

### Living Room / Dining Area

Flooring : Vitrified tiles DC (600mm x 600mm)

Wall : Wall putty (ready to paint)

Ceiling : Wall putty (ready to paint)

#### Door & windows

Main door : Sal wood frames & flush doors with provision for video door phones

Balcony : Aluminum sliding door with full glazing

Windows/Glazing : UPVC/Powder coated aluminum windows with open able & fix combination

#### Electrical

Modular switches (Schneider/Havells/Anchor or equivalent make) and copper wiring

---

### Master Bedroom

Flooring : Vitrified tiles (600mm X 600mm)

Wall : Wall putty (ready to paint)

Ceiling : Wall putty (ready to paint)

#### Door & windows

Door frame : Sal wood frames

Shutter : Flush doors

Windows/Glazing : UPVC/Powder coated aluminum windows open able & fix combination

#### Electrical

Modular switches (Schneider/Havells/Anchor or equivalent make) and copper wiring

---

---

### Other Bedroom

Flooring : Vitrified tiles (600mm X 600mm)

Wall : Wall putty (ready to paint)

Ceiling : Wall putty (ready to paint)

#### Door & windows

Door frame : Sal wood frames

Shutter : Flush doors

Windows/Glazing : UPVC/Powder coated aluminum windows open able & fix combination

#### Electrical

Modular switches (Schneider/Havells/Anchor or equivalent make) and copper wiring

---

### Kitchen

Flooring : Anti-skid tiles

Wall : Ceramic tiles up to 2 ft. height above kitchen counter

Ceiling : Wall putty (ready to paint)

Counter : Granite slab

#### Door & windows

Shutter : Flush doors

#### Plumbing

Hot & cold line provisions

---

---

**Electrical**

---

Modular switches (Schneider/Havells/Anchor or equivalent make) and copper wiring

---

**Toilets**

Flooring : Anti-skid ceramic tiles

---

Wall : Ceramic Tiles up to 7 ft. height

---

Ceiling : Wall putty (ready to paint)

---

**Door & windows**

Door frame : Sal wood frames

---

Shutter : Flush doors

---

Windows/Glazing : UPVC/Powder coated aluminum windows

---

**Sanitary ware & CP**

White color sanitary ware with CP fittings Jaquar/ESS ESS/Kohler or equivalent brand

---

**Utility**

Flooring : Anti-skid tiles

---

Wall : Wall putty (ready to paint)

---

Ceiling : Wall putty (ready to paint)

---

**Balcony**

Flooring : Anti skid tiles

---

Wall : Painted to match the exterior elevation

---

Ceiling : Paint with lights installed

---

---

**Door**

---

Frame with shutter : UPVC/Powder coated aluminum type

---

Railing : MS Railing designed to match the exterior

---

**Common Areas - Interior****Ground floor Lobby**

Ceiling : POP with false ceiling

---

Lift Facia : Imported marble

---

Walls : Tiles/Imported marble/Paint

---

**Typical lobby**

Ceiling : POP ceiling

---

Lift Facia : Granite/Designer tiles

---

Walls : Vitrified tiles & paint combination

---

**Stairs**

Main stairs : Kota stones

---

Service stairs : Kota stones

---

**Additional Facility**

Inter com system : Apartment to apartment & all service areas

---

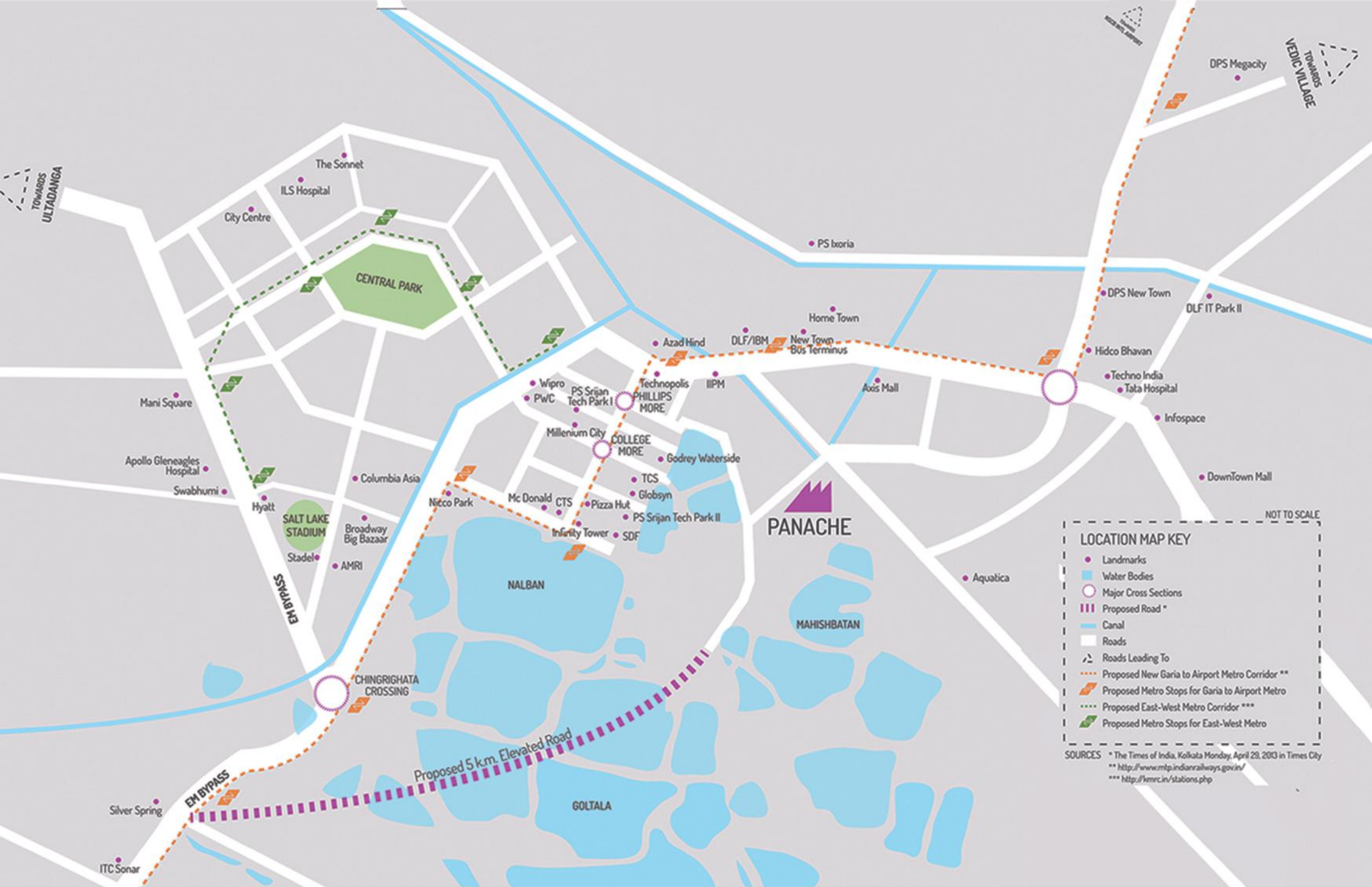
Security system : CCTV camera surveillance

---

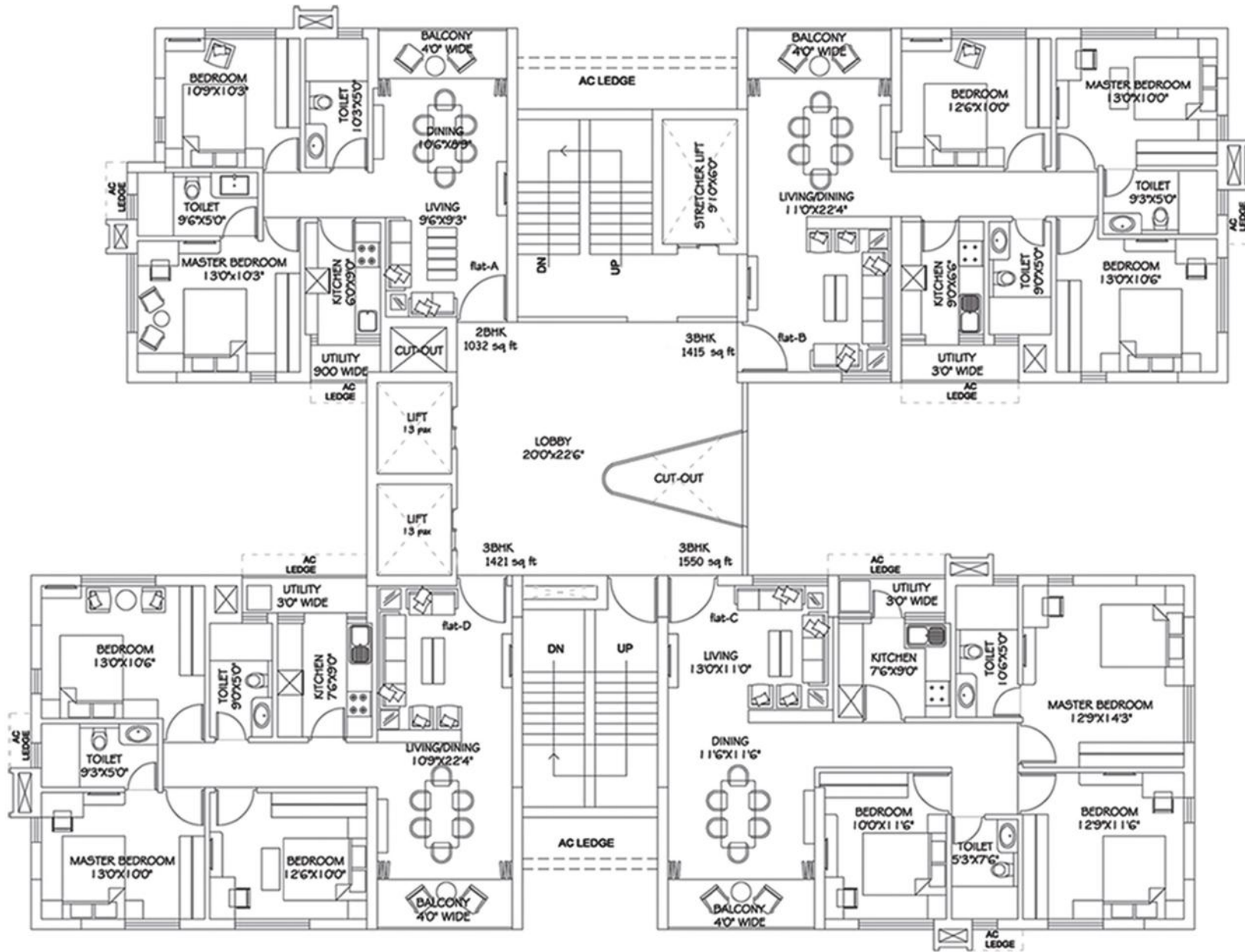
Power back up : For common areas only

---

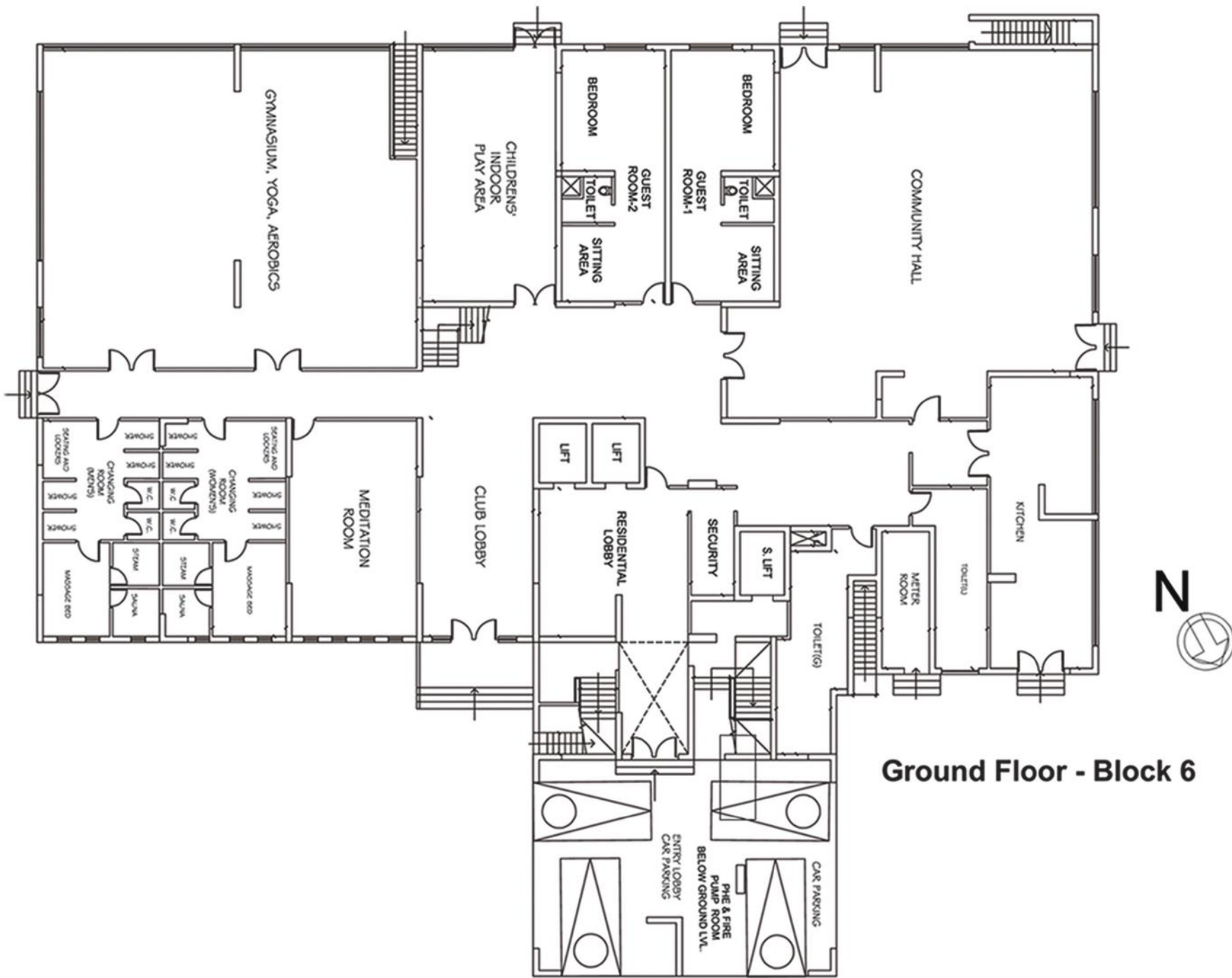






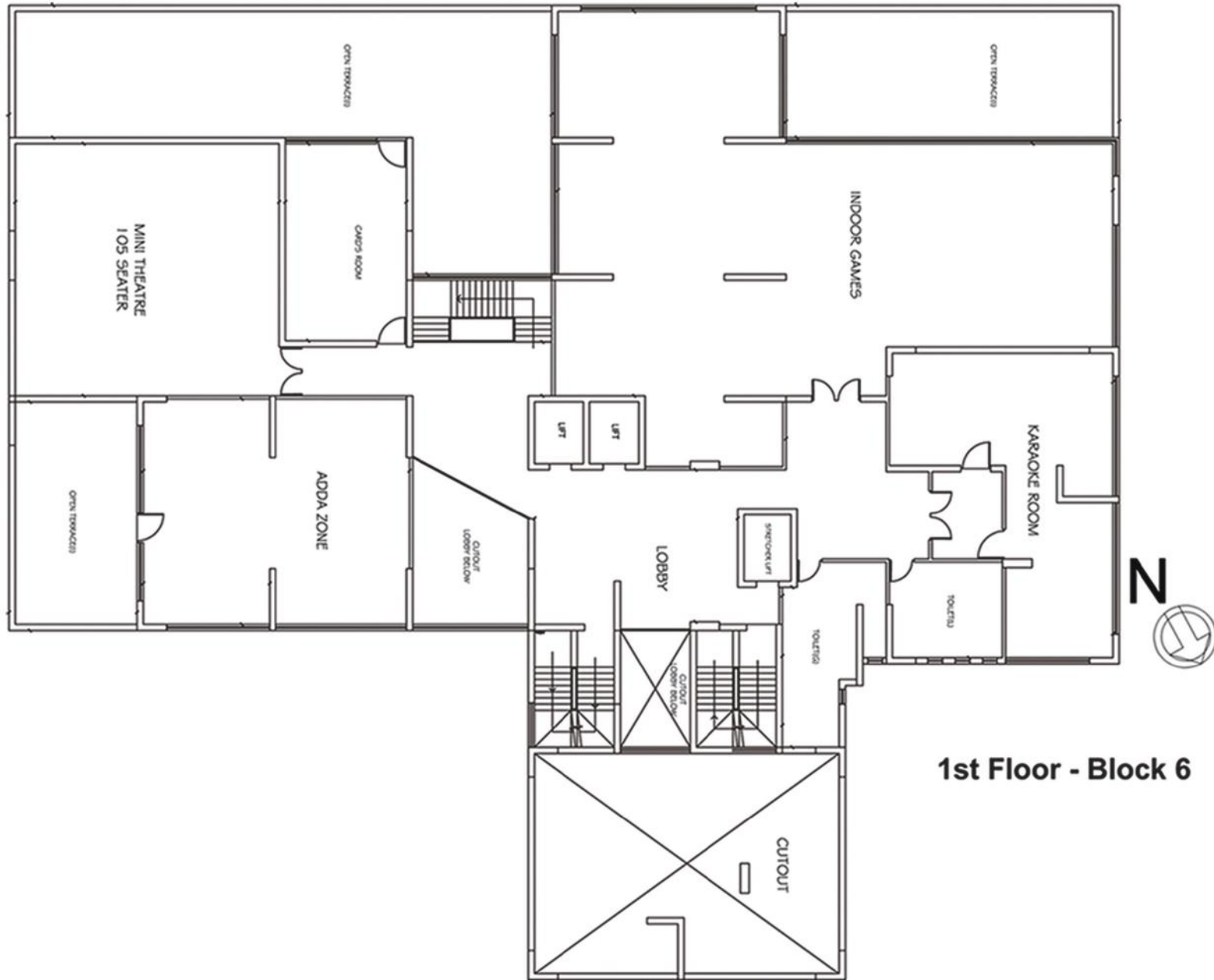


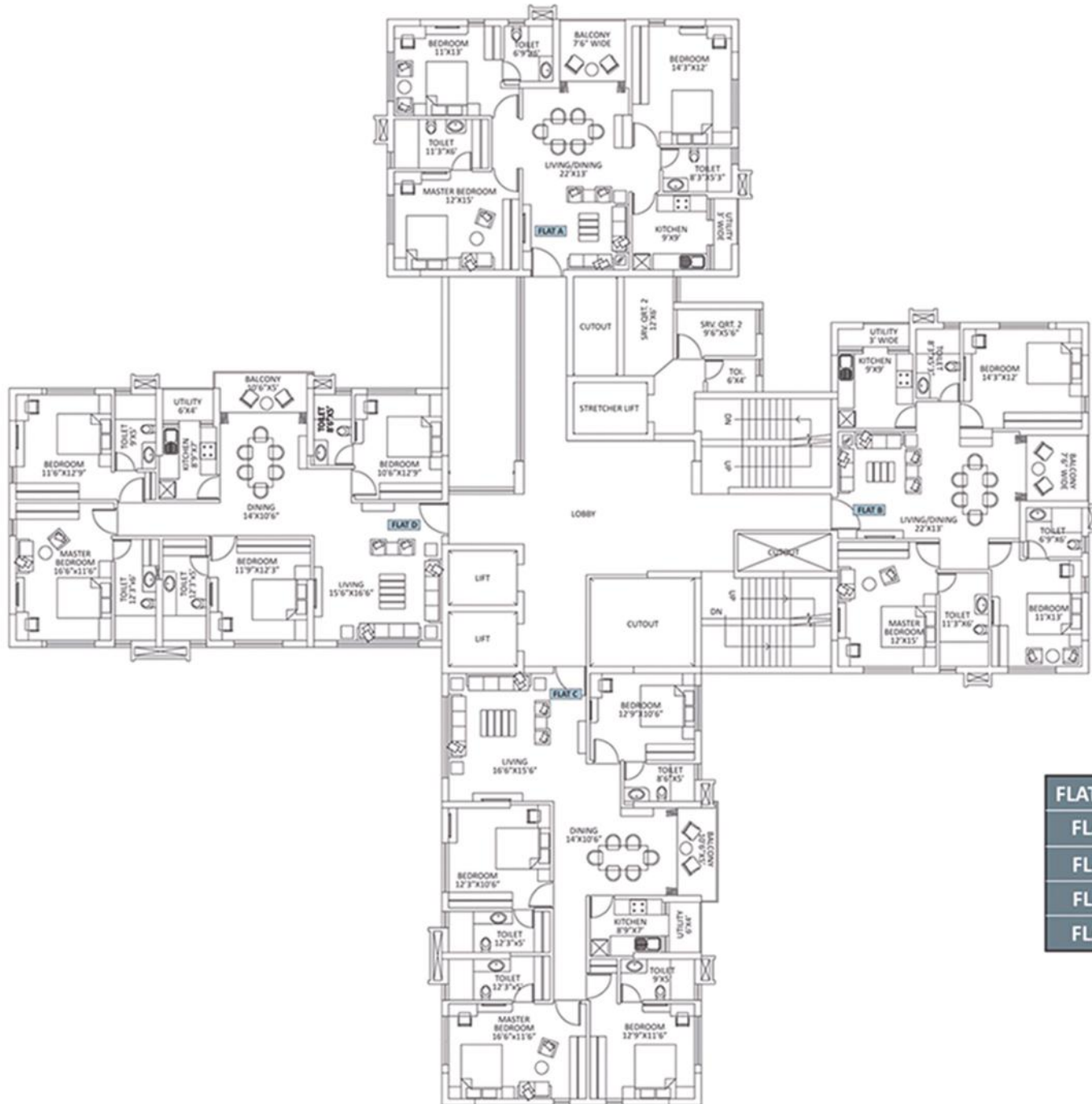
TYPICAL FLOOR PLAN (BLOCK 1 TO 5)



**Ground Floor - Block 6**







## Block 6

FLAT TYPE	Flat Area	S.Q.	Total Area
FLAT A	1712 sq.ft	-	1712 sq.ft
FLAT B	1712 sq.ft	-	1712 sq.ft
FLAT C	2159 sq.ft	141 sq.ft	2300 sq.ft
FLAT D	2159 sq.ft	141 sq.ft	2300 sq.ft